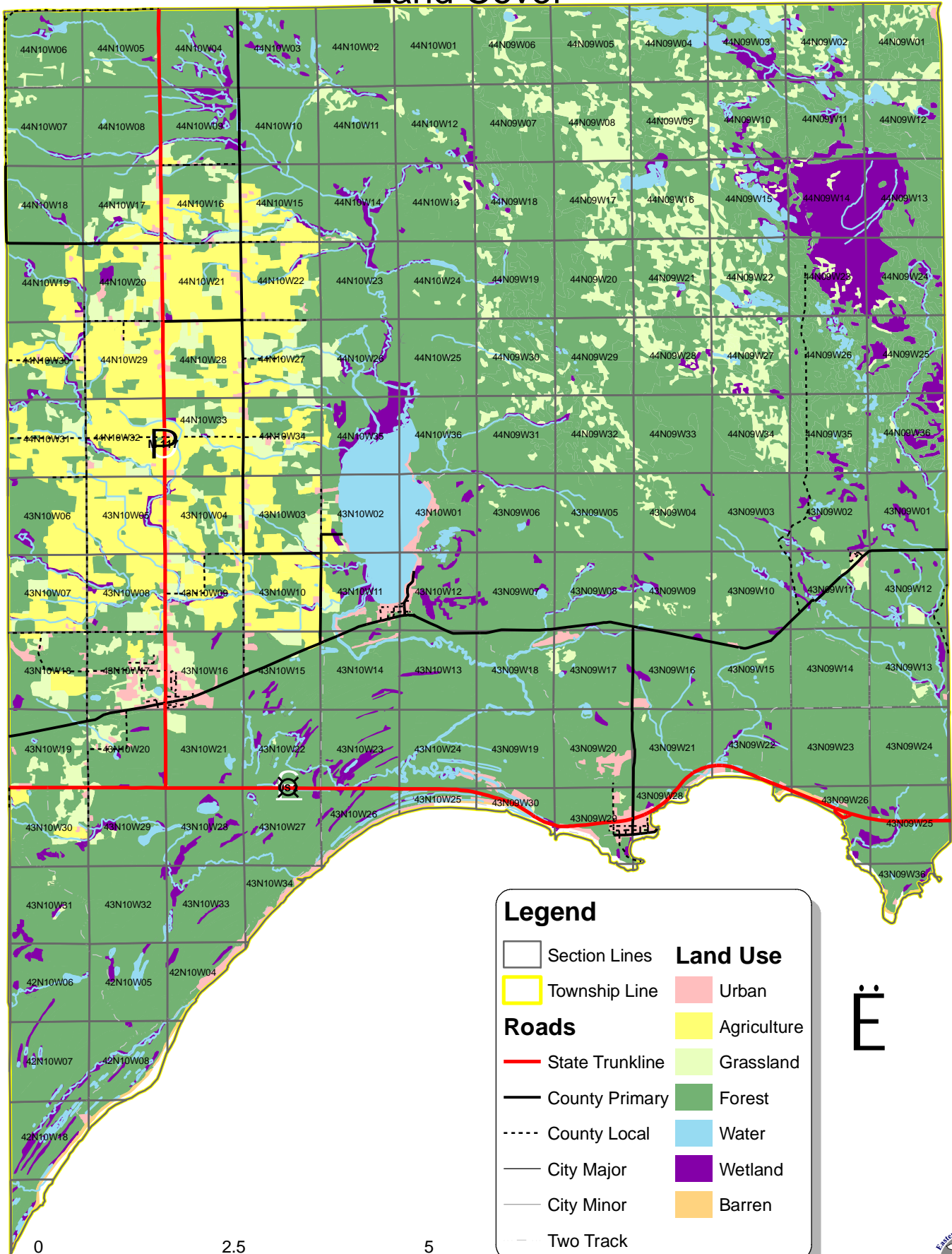


# Garfield Township Map #1 Land Cover



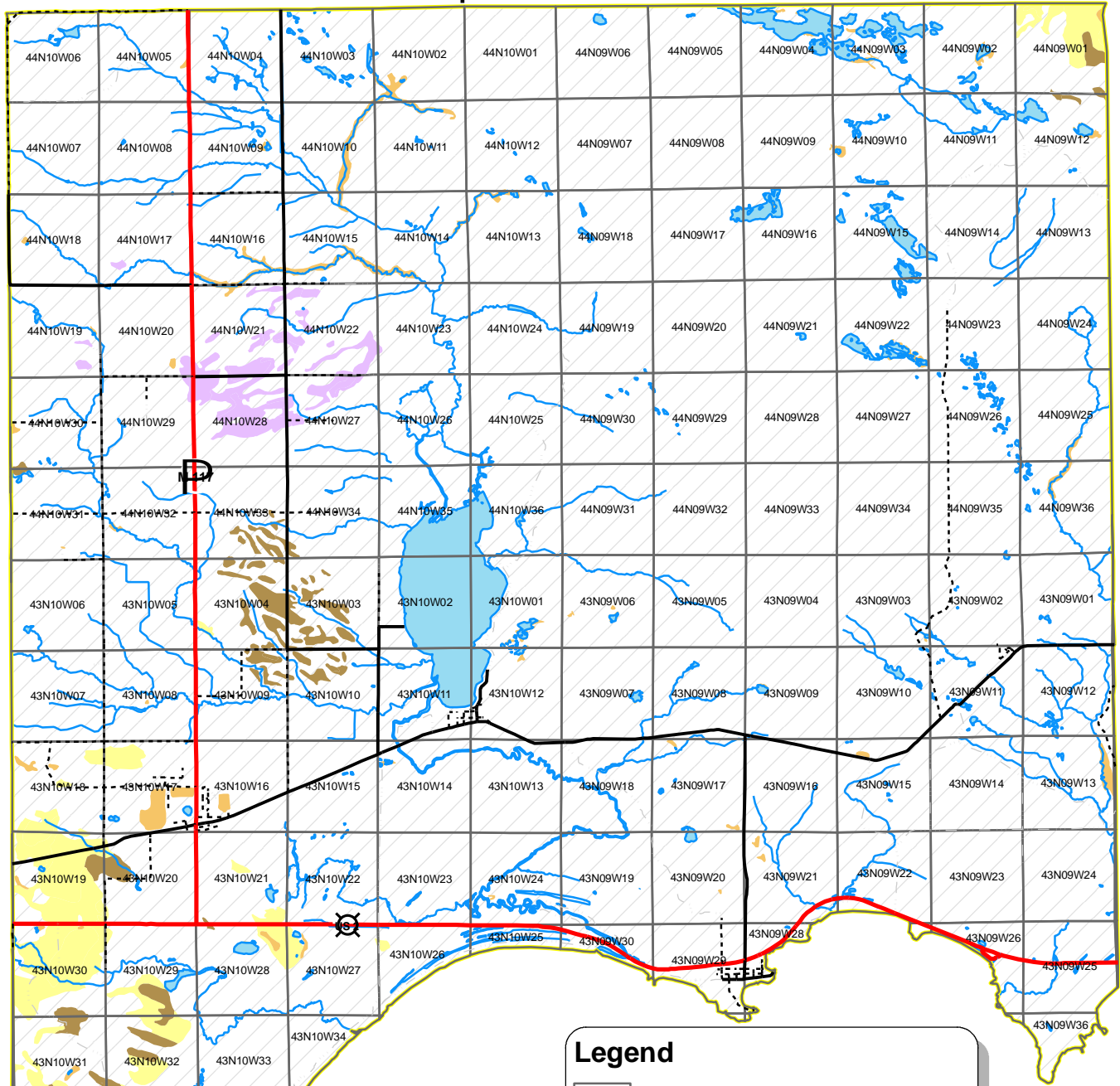
0 2.5 5 Miles  
1 inch equals 1.736111 miles

## Legend

- |                 |                 |
|-----------------|-----------------|
| Section Lines   | <b>Land Use</b> |
| Township Line   | Urban           |
| <b>Roads</b>    | Agriculture     |
| State Trunkline | Grassland       |
| County Primary  | Forest          |
| County Local    | Water           |
| City Major      | Wetland         |
| City Minor      | Barren          |
| Two Track       |                 |

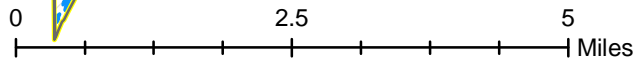


# Garfield Township Map #2 Depth to Bedrock



**Legend**

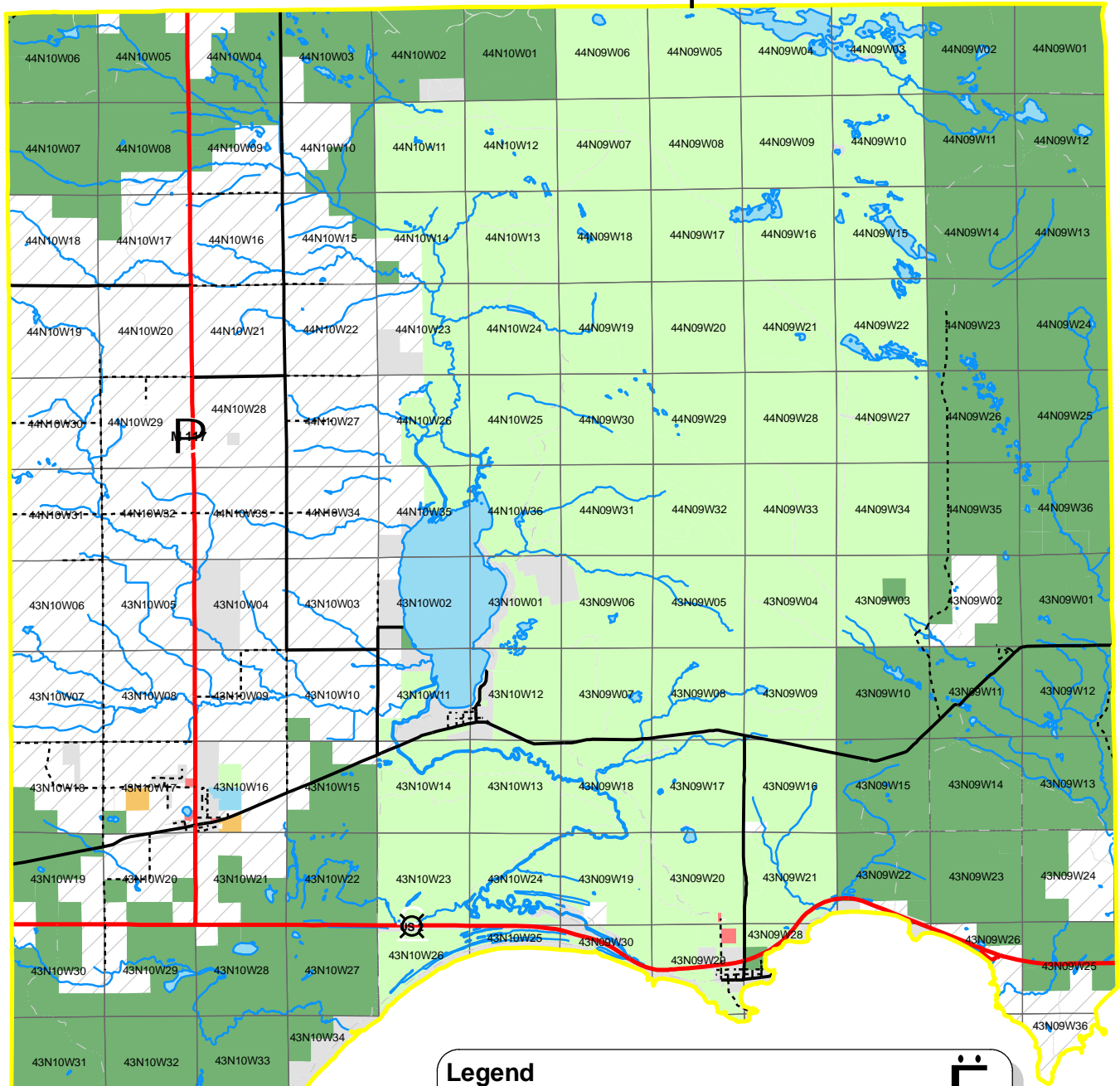
	Section Lines		<b>Rock Depth (ft)</b>
	Township Line		0
	Rivers		1 - 10
	Lakes		11 - 20
	State Trunkline		21 - 60
	County Primary		61 - 80
	County Local		
	City Major		
	City Minor		
	Two Track		



1 inch equals 1.736111 miles

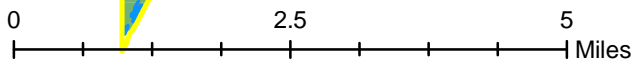


# Garfield Township Map #3 Land Ownership



**Legend**

Township Line	<b>Ownership</b>
Section Lines	Michigan DNR/State of MI
Rivers	Hiawatha Sportsman's Club
Lakes	Township
<b>Roads</b>	County
State Trunkline	Twp Schools
County Primary	No Data Available
County Local	Private
City Major	
City Minor	
Two Track	

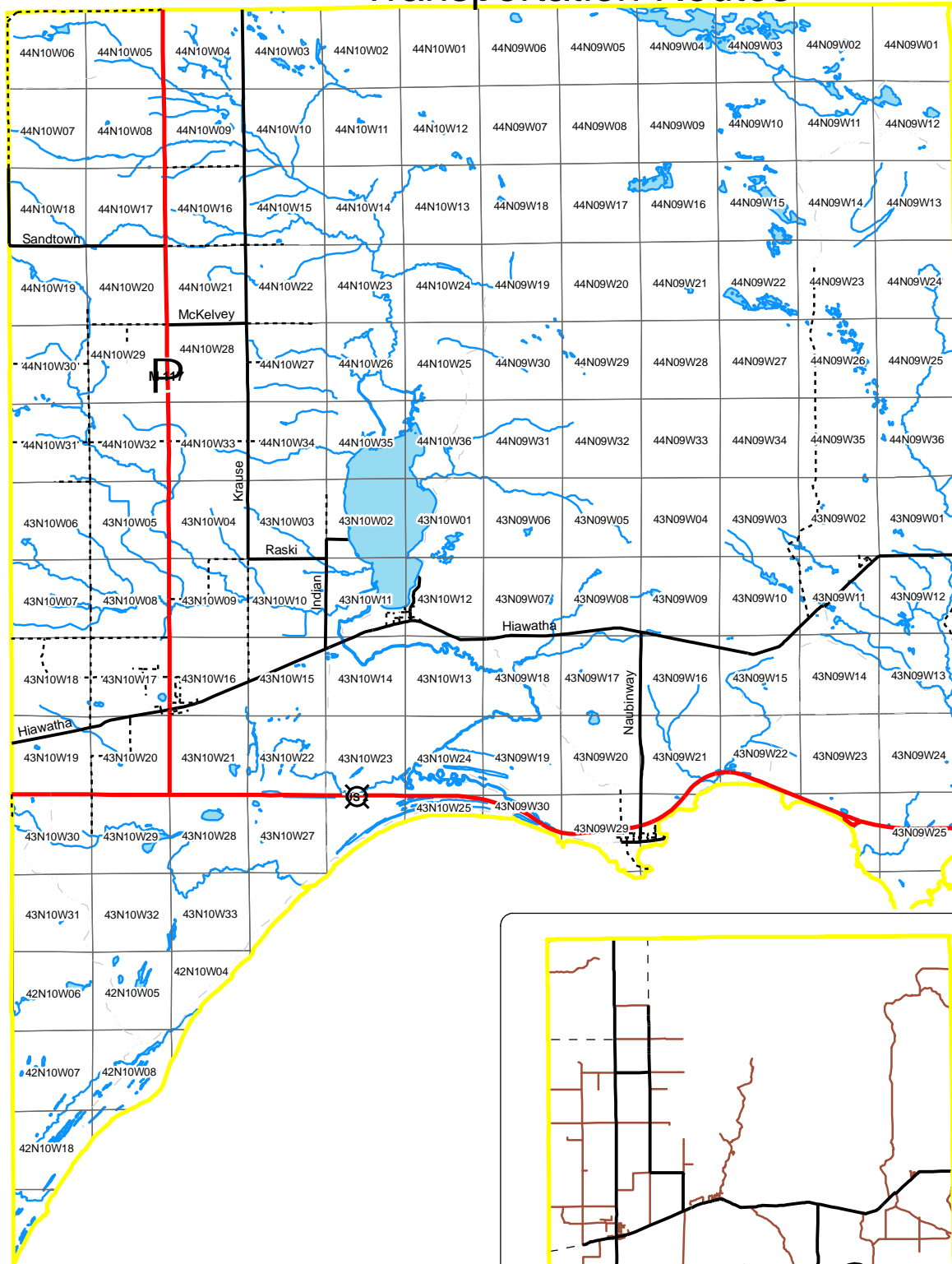


1 inch equals 1.736111 miles

Source: Mackinac CO Parcel Data, 2000



# Garfield Township Map #4 Transportation Routes

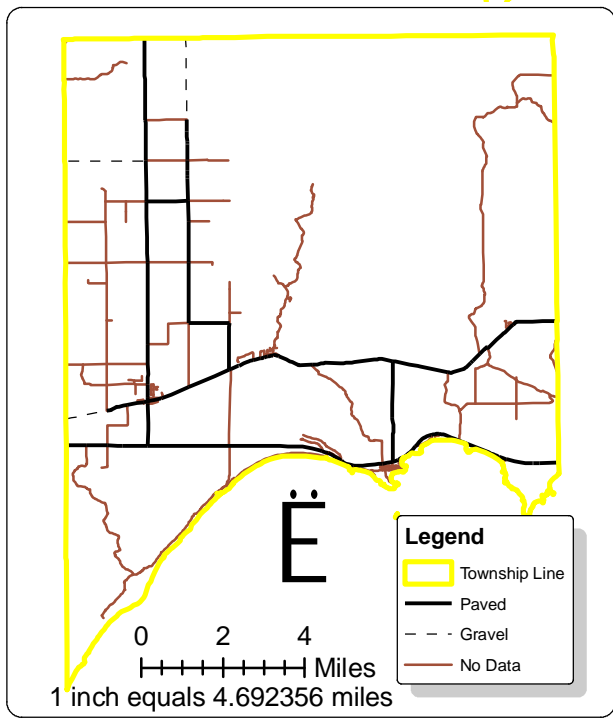


**Legend**

- Township Line
- Section Lines
- Lakes
- Rivers

**Roads**

- State Trunkline
- County Primary
- County Local
- City Major
- City Minor
- Two Track

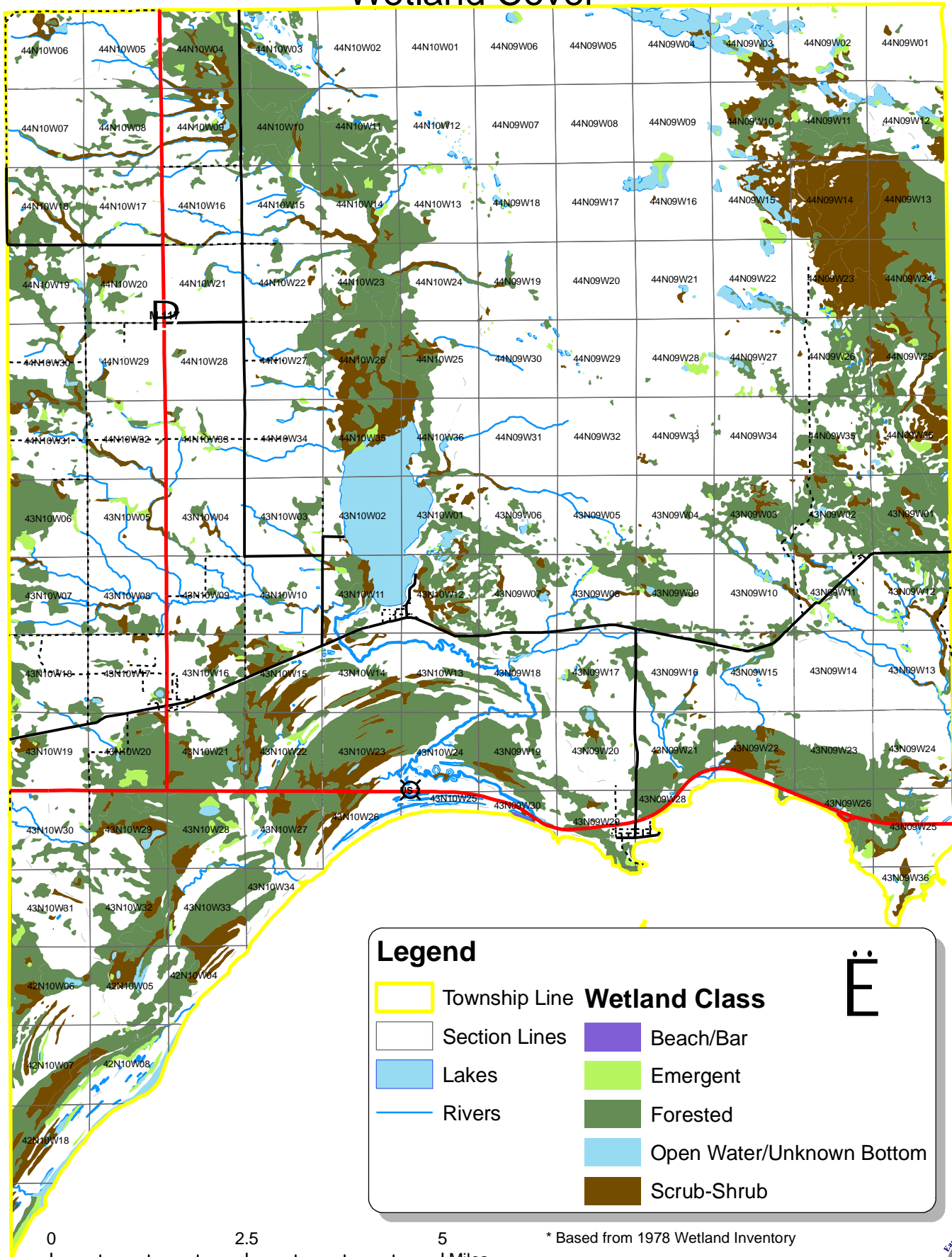


0 2.5 5 Miles  
1 inch equals 2.010005 miles

0 2 4 Miles  
1 inch equals 4.692356 miles



# Garfield Township Map #5 Wetland Cover



Legend		Wetland Class	
	Township Line		Beach/Bar
	Section Lines		Emergent
	Lakes		Forested
	Rivers		Open Water/Unknown Bottom
			Scrub-Shrub

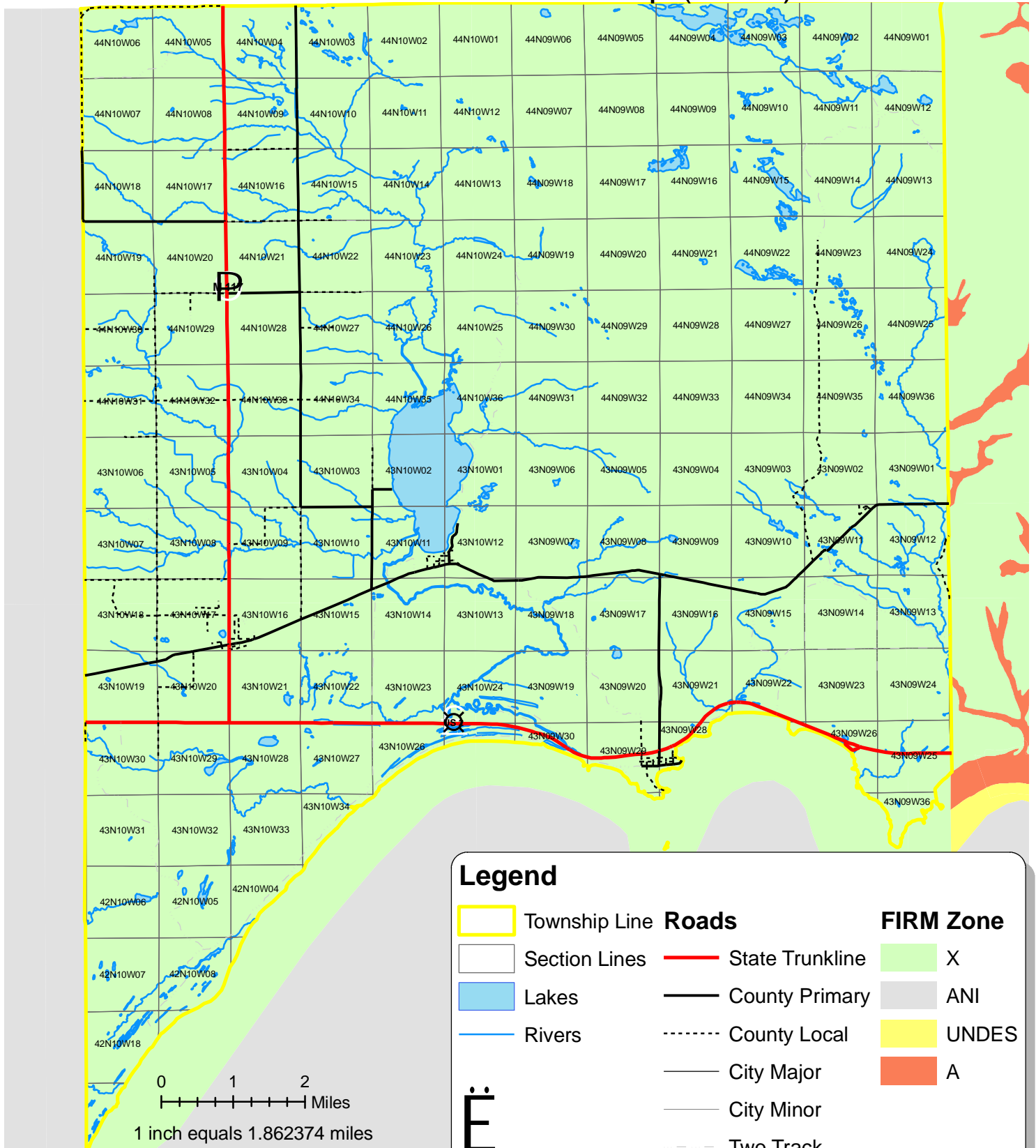
0                      2.5                      5  
Miles

1 inch equals 1.736111 miles

\* Based from 1978 Wetland Inventory



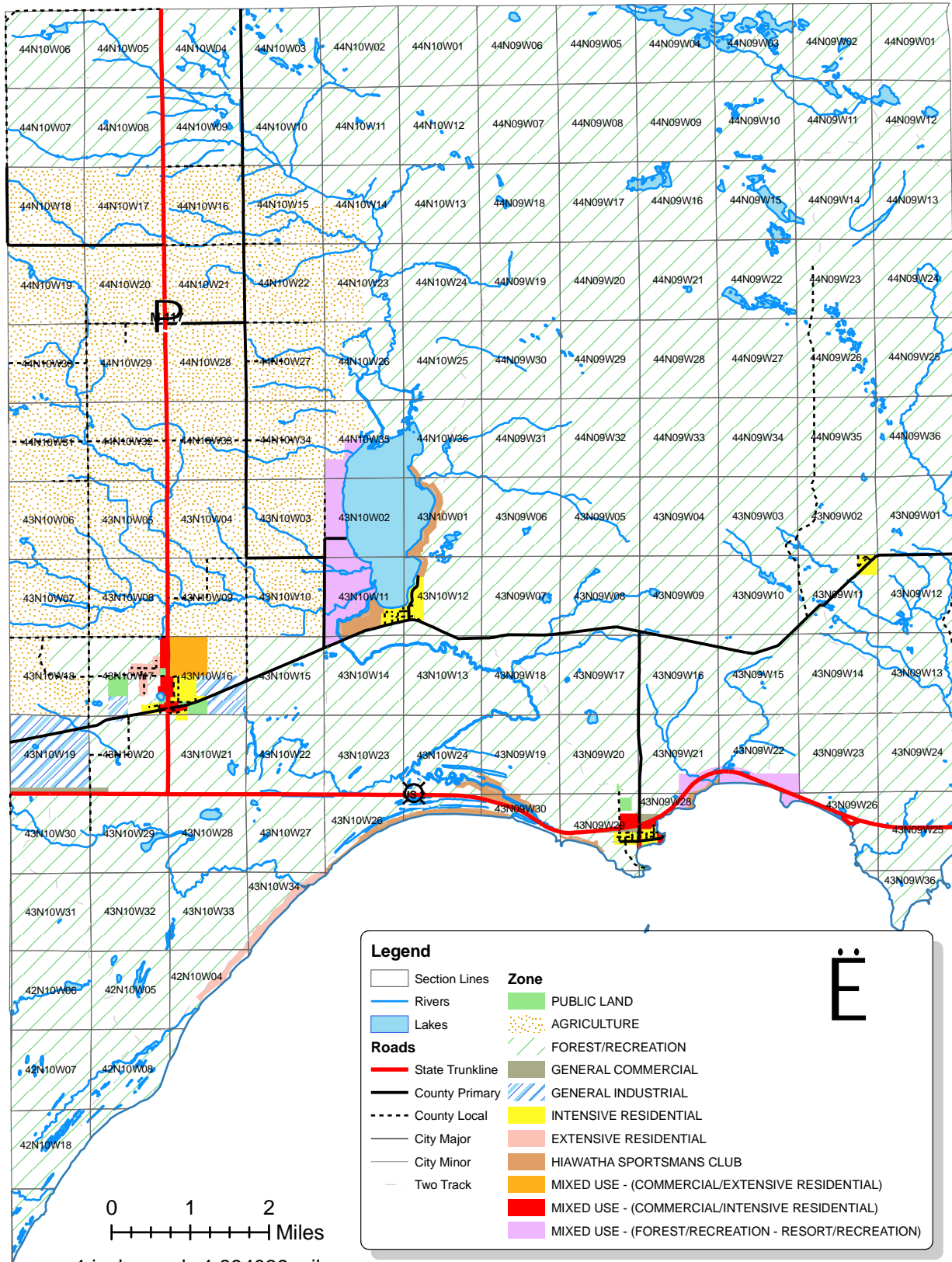
# Garfield Township Map #6 Flood Insurance Rate Map (FIRM)



### FIRM ZONE

- Zone X: area outside the 100- and 500-year floodplains
- Zone ANI: area that is not mapped on any published FIRM
- Zone UNDES: body of open water that has no defined flood hazard
- Zone A: area inundated by 100-year flooding; no base flood elevations (BFEs) determined

# Garfield Township Map #7 General Zoning



1 inch equals 1.894039 miles

This map is for general planning purposes only. It does not contain sufficient detail for site specific planning. Please refer to the Garfield Township Zoning Ordinance for more specific and detailed information.